

## **MUNICIPAL PLANNING & IMPLEMENTATION AGENDAS**

The PIA's presented for each municipality have their origin in many sources: recent master plans and other planning reports, coordination between local officials and consultants on this study, steering and advisory committee meetings, and PIA's prepared for a number of the municipalities under previous or ongoing center petition applications. The goals stated herein do not replace goals expressed in the PIA's of already approved center petitions, but are rather intended to augment them. The municipal PIA's represent the effort to implement the broad goals of the regional PIA at a local level.

Below is a key for other agencies and time frame.

### Agencies:

- Board of Freeholders
- Coastal Heritage Program
- CCADB - Cumberland County Agricultural Development Board
- CCDPD - Cumberland County Department of Planning and Development
- CCIA- Cumberland County Improvement Authority
- CC Office of Tourism- Cumberland County Office of Tourism
- CCUA- Cumberland County Utilities Authority
- COAH - Council on Affordable Housing
- Cooperative Extension
- County Parks Office
- Cumberland Community College
- Empowerment Zone
- Main Street
- NJDA - New Jersey Department of Agriculture
- NJDCA - New Jersey Department of Community Affairs
- NJDEP - New Jersey Department of Environmental Protection
- NJ Dept. of Commerce- New Jersey Department of Commerce
- NJDOT- New Jersey Department of Transportation
- NJEDA- New Jersey Economic Development Authority

- NJOSG- New Jersey Office of Smart Growth
- NJSHPO- New Jersey State Historic Preservation Office
- NJT – New Jersey Transit
- NJ Treasury
- NPS- National Parks Service
- Legislature
- Pinelands Commission
- Private owners
- Rutgers University
- SADC – State Agriculture Development Committee
- SJTPO- South Jersey Transportation Planning Organization
- USDA- United States Department of Agriculture

### Time frame:

Short - 1 to 2 years

Medium - 3 to 5 years

Long - More than 5 years

## COMMERCIAL TOWNSHIP MUNICIPAL PLANNING AND IMPLEMENTATION AGENDA

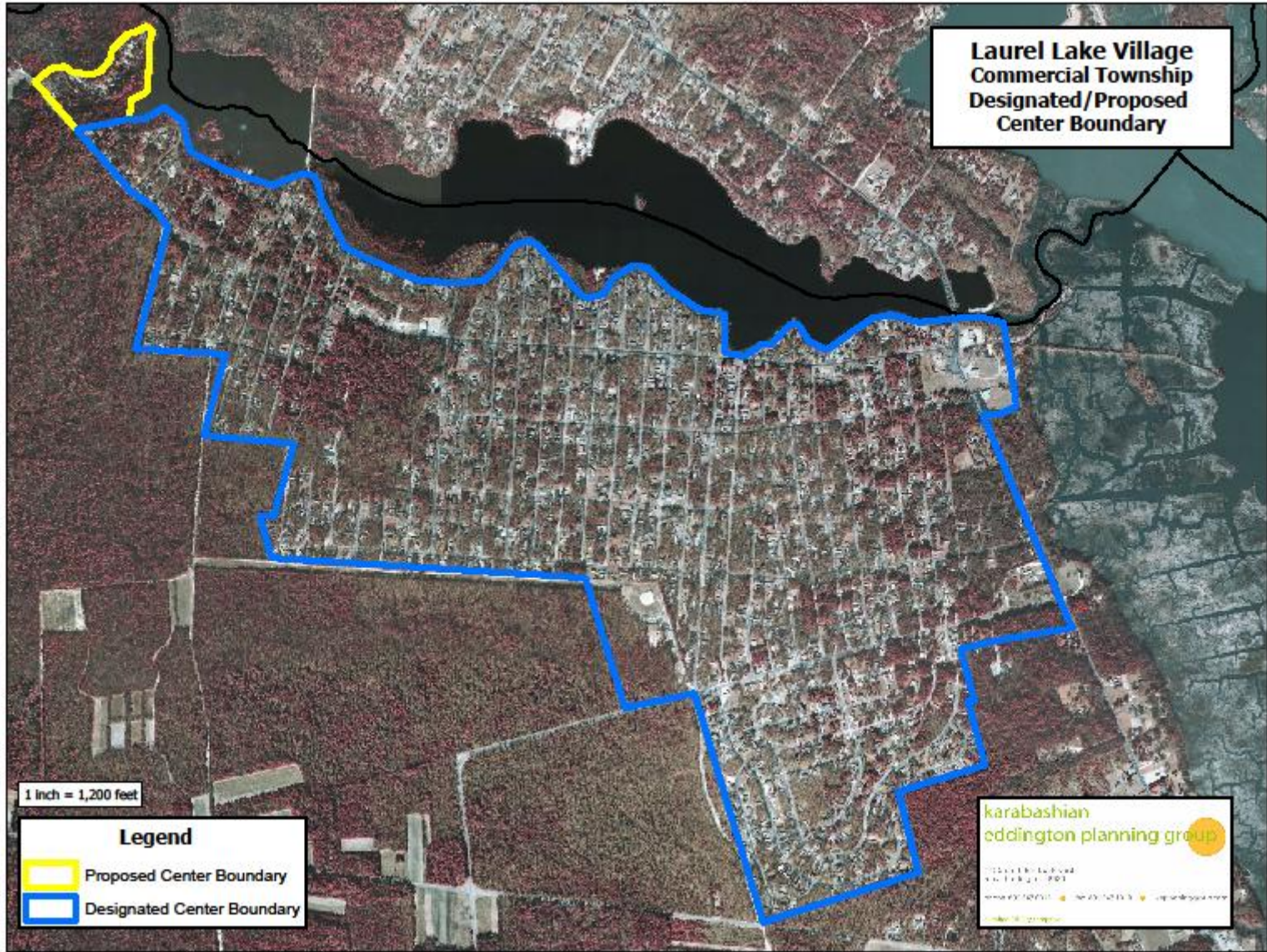
Areas	Issues	Strategies	Other Agencies	Time Frame	Targets
Natural Areas	Improve access and maintenance to WMAs and conservation lands	1 Seek funding as PILOT to support services to state and non-profit lands. Advocate public access to lands and develop cooperative program for maintenance.	NJDEP	On-going	PILOT funds
	Clearing of Maurice River channel to support marine activities and eco-tourism	2 Coordinate efforts for Maurice River channel improvements	NJDEP	Short	Channel improvements
Historic/Cultural	Enhance historic character to stabilize neighborhoods, foster ecotourism	3 Prepare historic preservation plan, and identify plan for rehabilitating historic resources.	CCDPD	Short	Historic preservation plan
		4 Seek funding to develop a scenic road plan in coordination with the County scenic byway plan efforts.	NJDOT, CCDPD	Long	Scenic Byway Plan
Mining	Incorporate reclamation activities into Township's economic development, recreation, ecotourism and conservation goals.	5 Evaluate partnering with private and/or public institutions to refine the Township's abilities to reclaim sand mines to viable fish and wildlife habitat.	NJDEP	Long	Reclaimed sand mines
		6 Limit future residential development in mining belt west of Haleyville.	CCDPD, NJDEP, NJOSG	Medium	Amended zoning ordinance
		7 Amend ordinance to require approval of conceptual reclamation/re-use plan for all future mining applications.	CCDPD, NJOSG, NJDEP	Medium	Amended ordinance - Completed
Transportation	Increase mass transit	8 Work with Cumberland County to pool resources for a shared rider service for riverfront communities.	CCDPD, SJTPO, NJ Transit	Long	New bus service/rail service
	Improve pedestrian safety in centers	9 Provide sidewalks and bike paths for key corridors connecting to centers and including county road system	NJDOT, CCIA, CCPD	Long	Pedestrian and bike facilities
	Develop transportation facilities to support eco-tourism efforts	10 Seek state funding to expand bicycle trails and to construct improvements. Integrate efforts with County Bike Plan.	NJDOT, CCPD	Medium	New pedestrian and bicycle facilities
Sewer/Water	Improve sewer and water infrastructure in centers, to better accommodate needed development and services	11 Address wastewater treatment needs for Port Norris, to permit expanded commercial uses, to support oyster and shellfish industry, and ecotourism.	NJDEP, CCDPD, CCUA	Long	Installation of sewer facilities
		12 Obtain NJDEP Sector Permit approval.	NJDEP, CCDPD, CCUA	Medium	NJDEP Sector Permit
		13 Address sewer and water infrastructure needs for Laurel Lake.	NJDEP, CCDPD, CCUA	Long	Installation of sewer and water facilities.
Economy	Enhance appearance of centers through streetscape	14 Prepare strategic revitalization plan for Port Norris, with prioritization of needs and of funding sources.	CEZ, NJOSG, CCDPD, NJDCA, NJ Commerce	Medium	Strategic plan

## COMMERCIAL TOWNSHIP MUNICIPAL PLANNING AND IMPLEMENTATION AGENDA

Areas	Issues	Strategies	Other Agencies	Time Frame	Targets	
	improvements and amenities, and through the use of guidelines for future developments	15	Continue streetscape improvement program in Mauricetown-Haleyville and Port Norris. Develop community consensus on image. Adopt public space design standards.	CCDPD, NJDOT	Long	Constructed improvements
		16	Improve gateways into villages. Identify priority sites and visual corridors. Develop signage/beautification programs	CCDPD, NJDOT, NPS, Coastal Heritage Program, CEZ	Long	Constructed improvements
		17	Seek funding from NJDCA and NJDOT for design and installation of sidewalk, curbs, streetlights, signs and other streetscape elements within centers and in business areas. Street enhancement will improve appearance and increase business.	CCDPD, CDC, NJDOT, NJDCA	Long	Constructed improvements
		18	Encourage development of specialty stores, recreational and entertainment uses along waterfront area, and Main Street in Port Norris	CC Economic Development Board, NJDCA, CCDPD	Long	New development
	Support economic and community development	19	Encourage regional efforts to stabilize lower reaches at mouth of Maurice River (Basket Flats)	Maurice River Twp, ARCOE, NJDEP	Short	Retain existing commercial facilities
	Support preservation of local resources and economies of small producers	19	Evaluate potential for designating "Aquaculture Development Areas" to encourage investment.	CCDPD, CCADB	Medium	Aquaculture Development Areas
<b>Community Facilities/Services</b>	Provide and maintain active recreational facilities in villages	20	Improve park at Laurel Lake. Expand senior recreational opportunities	NJDCA, NJDEP	Long	New and renovated recreational facilities
<b>Housing</b>	Improve Housing Quality	21	Obtain funding and prepare updated Housing Element and Fair Share Plan meeting COAH requirements.	NJOSP, COAH	Medium	Housing Element of Fair Share Plan
		22	Consider permitting accessory dwelling units and duplexes within village centers, to help meet affordable housing needs.	CCDPD, COAH	Medium	Amended zoning ordinance – Completed

**COMMERCIAL TOWNSHIP MUNICIPAL PLANNING AND IMPLEMENTATION AGENDA**

<b>Areas</b>	<b>Issues</b>		<b>Strategies</b>	<b>Other Agencies</b>	<b>Time Frame</b>	<b>Targets</b>
<b>Land Use</b>	Update land use plans and regulations	23	Update and revise Master Plan and Zoning Ordinance	NJOSP, NJDCA	Medium	New Master Plan and Zoning Ordinance - Completed
		24	Evaluate potential redesign of Laurel Lake to incorporate more public spaces, and opportunity for mixed uses.	CCDPD, OSG	Medium	Laurel Lake strategic plan – Completed
		25	Create village public space and private development design guidelines to maintain historic character and promote revitalization.	CCDPD, OSG	Medium	Design guidelines - Completed
<b>Intermunicipal Coordination</b>	Create Maurice River Region Planning Committee	26	Create planning committee for Millville, Maurice River, Commercial, Downe and Lawrence to help coordinate economic development, growth management conservation and intermunicipal cooperation including shared services and revenue and cost sharing.	CCDPD, CDC	Short	MR Region Planning Committee
	Continue regional planning efforts and projects	27	Continue WSCR planning process after Plan is endorsed to implement projects and develop new plans and policies. Continue support for major WSCR projects, including the development of revenue sharing plans, intermunicipal industrial park and the Rural Enterprise Zone.	CDC, CCDPD, NJOSG	On-going	Implementation of projects, new plans
	Reduction of costs for municipal services	28	Participate in regional shared services study to identify potential opportunities to reduce costs.	CDC	Medium	Shared services



**Laurel Lake Village  
Commercial Township  
Designated/Proposed  
Center Boundary**

1 Inch = 1,200 feet

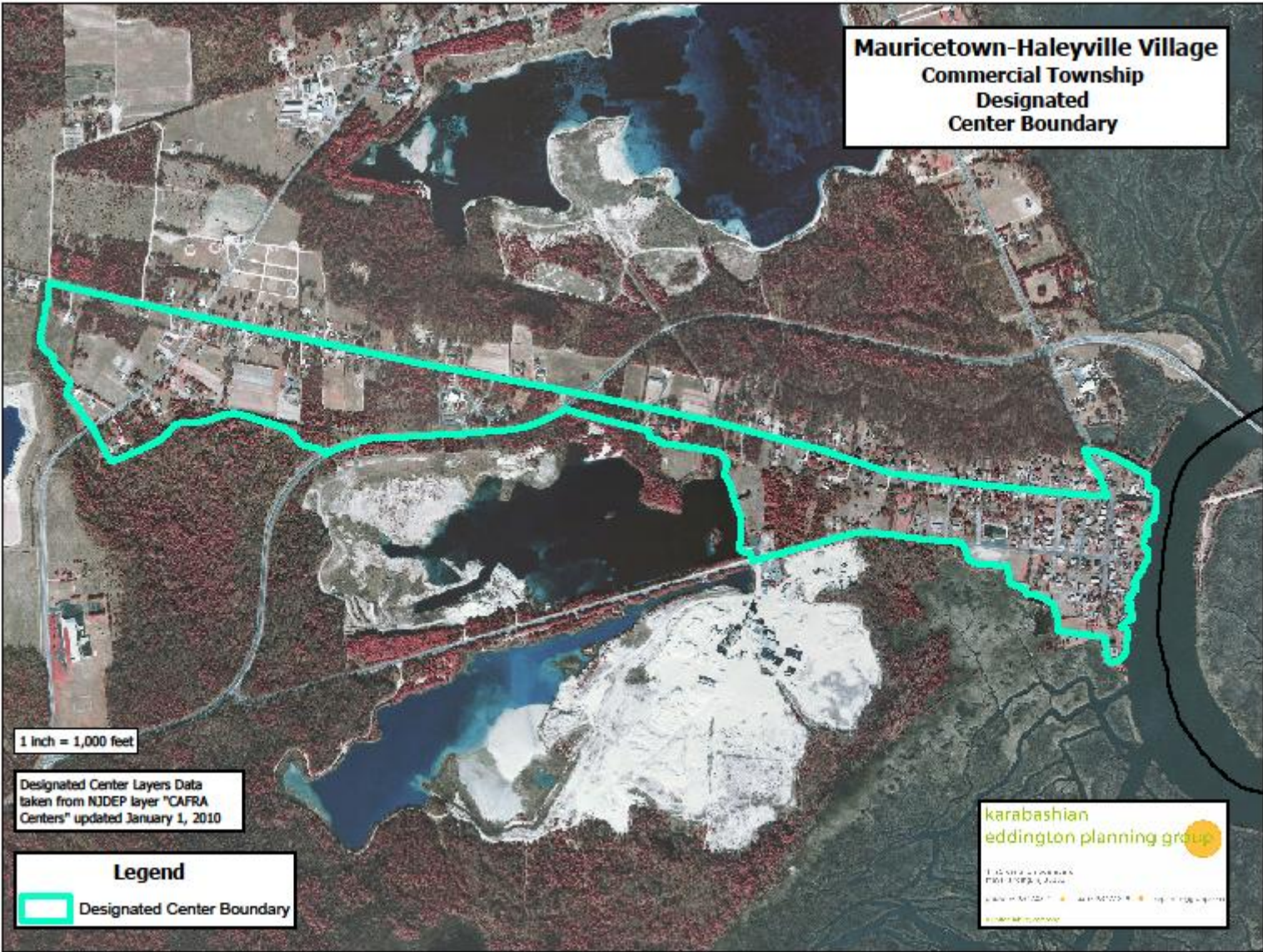
**Legend**

- Proposed Center Boundary
- Designated Center Boundary

**karabashian  
eddington planning group**

1125 West 14th Street  
Laurel, MD 21093  
301.271.1200 • 301.271.1203 • [www.karabashian.com](http://www.karabashian.com)

**Mauricetown-Haleyville Village  
Commercial Township  
Designated  
Center Boundary**

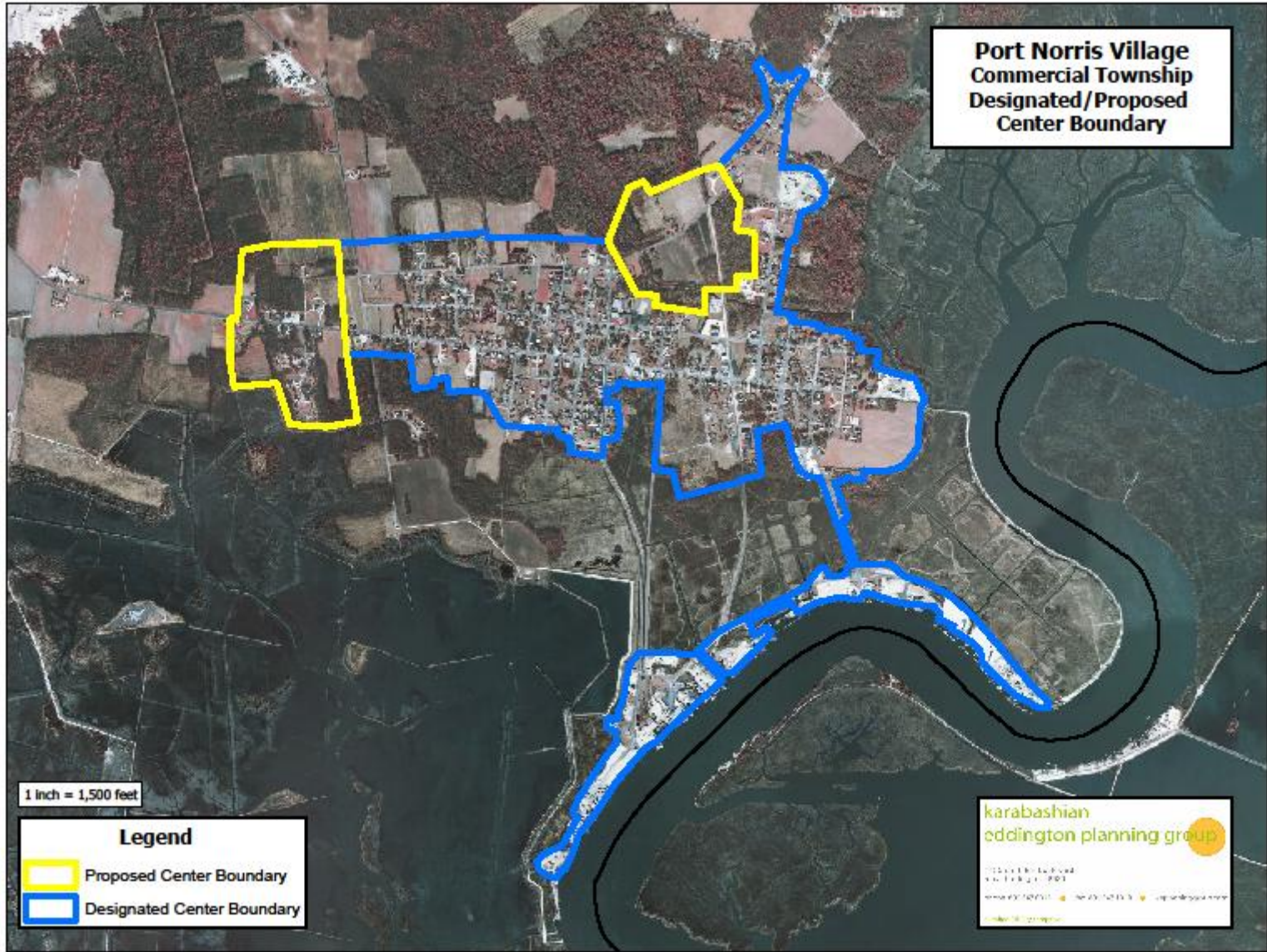


1 Inch = 1,000 feet

Designated Center Layers Data  
taken from NJDEP layer "CAFRA  
Centers" updated January 1, 2010

**Legend**  
[Red Line] Designated Center Boundary

**karabashian  
eddington planning group**  
115 North Lakeside  
PO Box 3000  
Aurora, NJ 07002  
Phone: 908-225-1100 | Fax: 908-225-1101 | <http://www.karabashian.com>



**Port Norris Village  
Commercial Township  
Designated/Proposed  
Center Boundary**

1 Inch = 1,500 feet

**Legend**

- Proposed Center Boundary
- Designated Center Boundary

**karabashian  
eddington planning group**

10000 Rte 138, Suite 100  
Port Norris, VA 23073  
757-231-1200 | www.karabashian.com