

MUNICIPAL PLANNING & IMPLEMENTATION AGENDAS

The PIA's presented for each municipality have their origin in many sources: recent master plans and other planning reports, coordination between local officials and consultants on this study, steering and advisory committee meetings, and PIA's prepared for a number of the municipalities under previous or ongoing center petition applications. The goals stated herein do not replace goals expressed in the PIA's of already approved center petitions, but are rather intended to augment them. The municipal PIA's represent the effort to implement the broad goals of the regional PIA at a local level.

Below is a key for other agencies and time frame.

Agencies:

- Board of Freeholders
- Coastal Heritage Program
- CCADB - Cumberland County Agricultural Development Board
- CCDPD - Cumberland County Department of Planning and Development
- CCIA- Cumberland County Improvement Authority
- CC Office of Tourism- Cumberland County Office of Tourism
- CCUA- Cumberland County Utilities Authority
- COAH - Council on Affordable Housing
- Cooperative Extension
- County Parks Office
- Cumberland Community College
- Empowerment Zone
- Main Street
- NJDA - New Jersey Department of Agriculture
- NJDCA - New Jersey Department of Community Affairs
- NJDEP - New Jersey Department of Environmental Protection
- NJ Dept. of Commerce- New Jersey Department of Commerce
- NJDOT- New Jersey Department of Transportation
- NJEDA- New Jersey Economic Development Authority

- NJOSG- New Jersey Office of Smart Growth
- NJSHPO- New Jersey State Historic Preservation Office
- NJT – New Jersey Transit
- NJ Treasury
- NPS- National Parks Service
- Legislature
- Pinelands Commission
- Private owners
- Rutgers University
- SADC – State Agriculture Development Committee
- SJTPO- South Jersey Transportation Planning Organization
- USDA- United States Department of Agriculture

Time frame:

Short - 1 to 2 years

Medium - 3 to 5 years

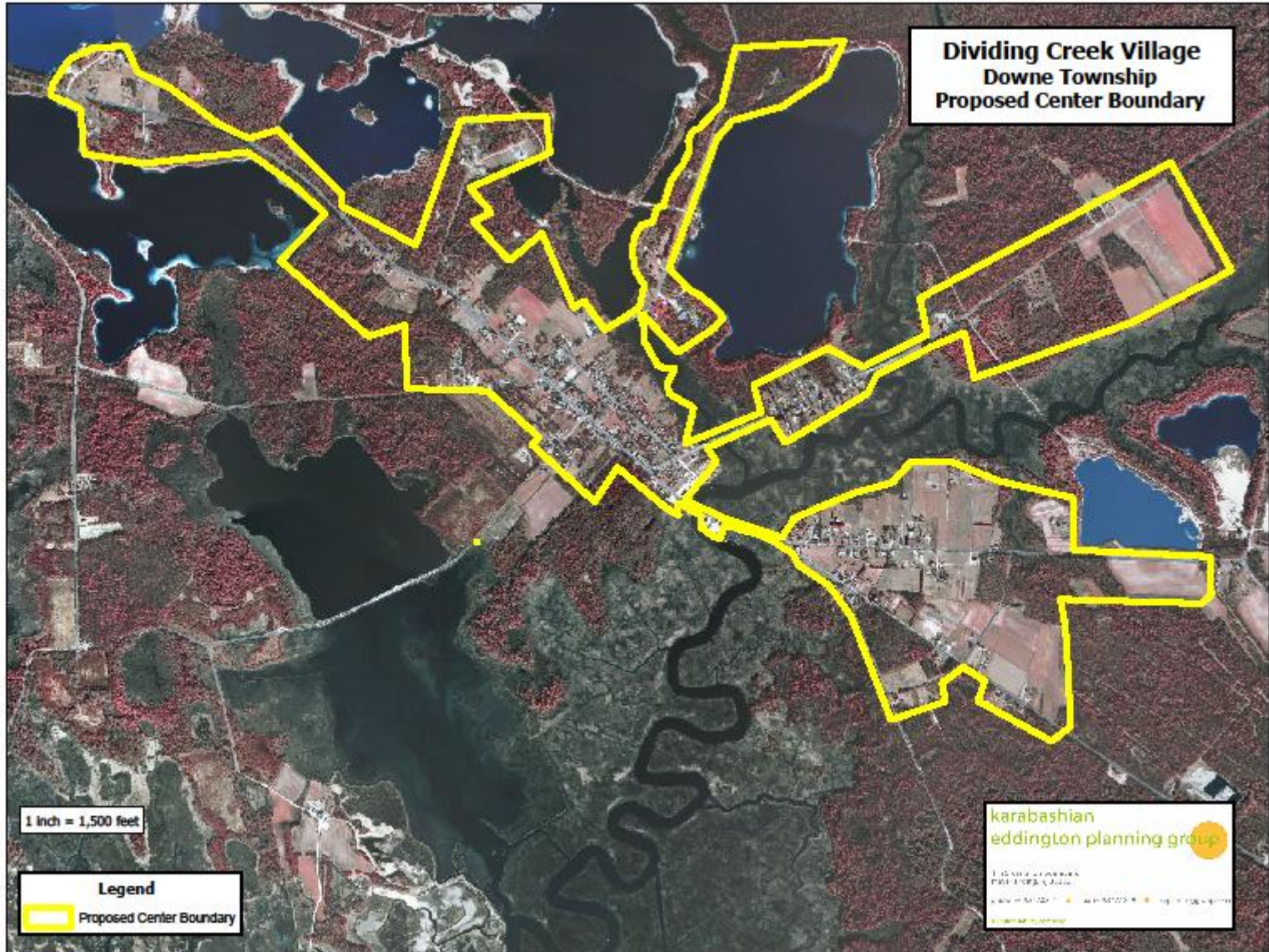
Long - More than 5 years

DOWNE TOWNSHIP MUNICIPAL PLANNING AND IMPLEMENTATION AGENDA

Areas	Issues		Strategies	Other Agencies	Time Frame	Targets
Natural Areas	Non-profit lands	1	Natural Lands Trust acreage in PILOT; no funding or monetary compensation provided to the Township	CCDPD, NJDEP	On-going	Compensation to the Township
	Improve access and maintenance to WMAs and conservation lands	2	Seek funding to support services to state and non-profit lands. Advocate public access to lands and develop cooperative program for maintenance. Develop needed facilities and services at Bevans WMA	NJDEP	On-going	funds; improved facilities
		3	Pursue funds through state to construct boardwalk at Fortescue. Determine other needed facilities, and pursue funding.	NJDOT, NJDEP	Medium	Boardwalk, other facilities
Historic/Cultural	Enhance historic character to stabilize neighborhoods, foster ecotourism	4	Coordinate with County on inclusion of Downe Township in scenic byway linking Delaware Memorial Bridge with scenic byway proposed by Pinelands Commission	CCDPD	Medium	Scenic Byway
Mining	Incorporate reclamation activities into Township's economic development, recreation, ecotourism and conservation goals.	5	Coordinate mining activities and reclamation efforts with state and industry partners.	CCDPD, NJDEP	On-going	Mining oversight committee
		6	Review commercial sand mining ordinance after preparation of County model ordinance, to ensure opportunities for recreation, tourism and habitat diversification.	CCDPD, NJDEP	Medium	Ordinance
Transportation	Develop transportation facilities to support eco-tourism efforts	7	Seek state funding to prepare pedestrian and bicycle facilities plan and to construct improvements. Integrate efforts with County Bike Plan.	NJDOT, CCDPD	Medium	New pedestrian and bicycle facilities
		8	Coordinate with County on ongoing transportation planning efforts.	CCDPD, SJTPO, NJDOT	Ongoing	Signage program highlighting points of interest
		9	Coordinate with State on road improvements and on-going road maintenance. Examples of key access roads include Ackley Road.	NJDEP, NJDCA	Long	Road improvements and road maintenance program
Sewer/Water	Develop sewer/water to support directed growth in centers	10	Obtain funding for wastewater management plan in Fortescue to protect environmentally sensitive area, and support possible future growth.	NJDEP	Long	Improved septic design
		11	Secure technical advise and assistance from State on new wastewater management technologies	NJDEP	On-going	Determine available options
		12	Evaluate alternative sewer options for centers to support focused growth in Dividing Creek and Newport	NJDEP	Long	Improved septic design

DOWNE TOWNSHIP MUNICIPAL PLANNING AND IMPLEMENTATION AGENDA


Areas	Issues	Strategies	Other Agencies	Time Frame	Targets	
Economy	Support development in centers	13	Participate in business development program for CR553 corridor. Seek funding from NJDCA and NJDOT for design and installation of sidewalk, curbs, streetlights, signs and other streetscape elements on CR553 and adjacent streets within centers and in business areas. Street enhancement will improve appearance and increase business.	CDC, CCDPD, NJDOT, NJDCA	Long	Obtained funding, constructed improvements
		14	Seek funding to prepare development plan for Fortescue, focusing on infrastructure, circulation, beach erosion, and marketing. Should be integrated with County Plans.	NJDEP, CCDPD, NJOSG, NJDCA	Long	Fortescue strategic plan
Housing	Provide needed affordable housing	15	Seek funding to undertake Housing Plan in accord with COAH regulations	NJOSG, COAH	Medium	Housing Element and Fair Share Plan
		16	Publicize existing housing grant program with Township.	CCDPD, COAH	On-going	Increased stock of rehabilitated housing
Land Use	Support development in centers	17	Evaluate R-1 zoning density in Newport Center. Consider increasing density if sewerage treatment becomes available.	CCDPD, OSG	Medium	Zoning ordinance
	Update land use plans and regulations	18	Update and revise Master Plan and Zoning Ordinance; revised Ordinance should include a "delineated mining areas" overlay	NJOSP, NJDCA	Medium	Exhibit showing the status of all mining sites
Intermunicipal Coordination	Create Maurice River Region Planning Committee	19	Create planning committee for Millville, Maurice River, Commercial, Downe and Lawrence to help coordinate economic development, growth management, conservation and intermunicipal cooperation including shared services and revenue and cost sharing	CCDPD, CDC	Short	MR Region Planning Committee
	Continue regional planning efforts and projects	20	Continue WSCR planning process after Plan is endorsed to implement projects and development new plans and policies. Continue support for major WSCR projects, including the development of revenue sharing plans, intermunicipal industrial park and the Rural Enterprise Zone.	CDC, CCDPD, NJOSG	On-going	Implementation of projects, new plans
	Reduction of costs for municipal services	21	Participate in regional shared services study to identify potential opportunities to reduce costs.	CDC	Short	Shared services



**Fortescue Village
Downe Township
Proposed Center Boundary**

1 inch = 1,200 feet

Legend

 Proposed Center Boundary

karabashian
eddington planning group

1100 N. 10th Street
PO Box 1000
Aurora, NC 27003
919.487.1111 | 919.487.1112 | info@kagp.com
www.karabashian.com



**Gandy Beach Hamlet
Downe Township
Proposed Center Boundary**



1 inch = 400 feet

Legend

 Proposed Center Boundary

karabashian
eddington planning group

1100 N. GARDNER
DOWNE TOWNSHIP, PA 17033
717-339-1234 • 717-339-1235 • info@kagroup.com
www.kagroup.com

**Money Island Beach Hamlet
Downe Township
Proposed Center Boundary**

1 inch = 600 feet

Legend
Proposed Center Boundary

karabashian
eddington planning group

1100 N. GARDNER
FAYETTEVILLE, AR 72701
937.527.1111 | 937.527.1111 | info@kagroup.com
www.kagroup.com

