

MUNICIPAL PLANNING & IMPLEMENTATION AGENDAS

The PIA's presented for each municipality have their origin in many sources: recent master plans and other planning reports, coordination between local officials and consultants on this study, steering and advisory committee meetings, and PIA's prepared for a number of the municipalities under previous or ongoing center petition applications. The goals stated herein do not replace goals expressed in the PIA's of already approved center petitions, but are rather intended to augment them. The municipal PIA's represent the effort to implement the broad goals of the regional PIA at a local level.

Below is a key for other agencies and time frame.

Agencies:

- Board of Freeholders
- Coastal Heritage Program
- CCADB - Cumberland County Agricultural Development Board
- CCDPD - Cumberland County Department of Planning and Development
- CCIA- Cumberland County Improvement Authority
- CC Office of Tourism- Cumberland County Office of Tourism
- CCUA- Cumberland County Utilities Authority
- COAH - Council on Affordable Housing
- Cooperative Extension
- County Parks Office
- Cumberland Community College
- Empowerment Zone
- Main Street
- NJDA - New Jersey Department of Agriculture
- NJDCA - New Jersey Department of Community Affairs
- NJDEP - New Jersey Department of Environmental Protection
- NJ Dept. of Commerce- New Jersey Department of Commerce
- NJDOT- New Jersey Department of Transportation
- NJEDA- New Jersey Economic Development Authority

- NJOSG- New Jersey Office of Smart Growth
- NJSHPO- New Jersey State Historic Preservation Office
- NJT – New Jersey Transit
- NJ Treasury
- NPS- National Parks Service
- Legislature
- Pinelands Commission
- Private owners
- Rutgers University
- SADC – State Agriculture Development Committee
- SJTPO- South Jersey Transportation Planning Organization
- USDA- United States Department of Agriculture

Time frame:

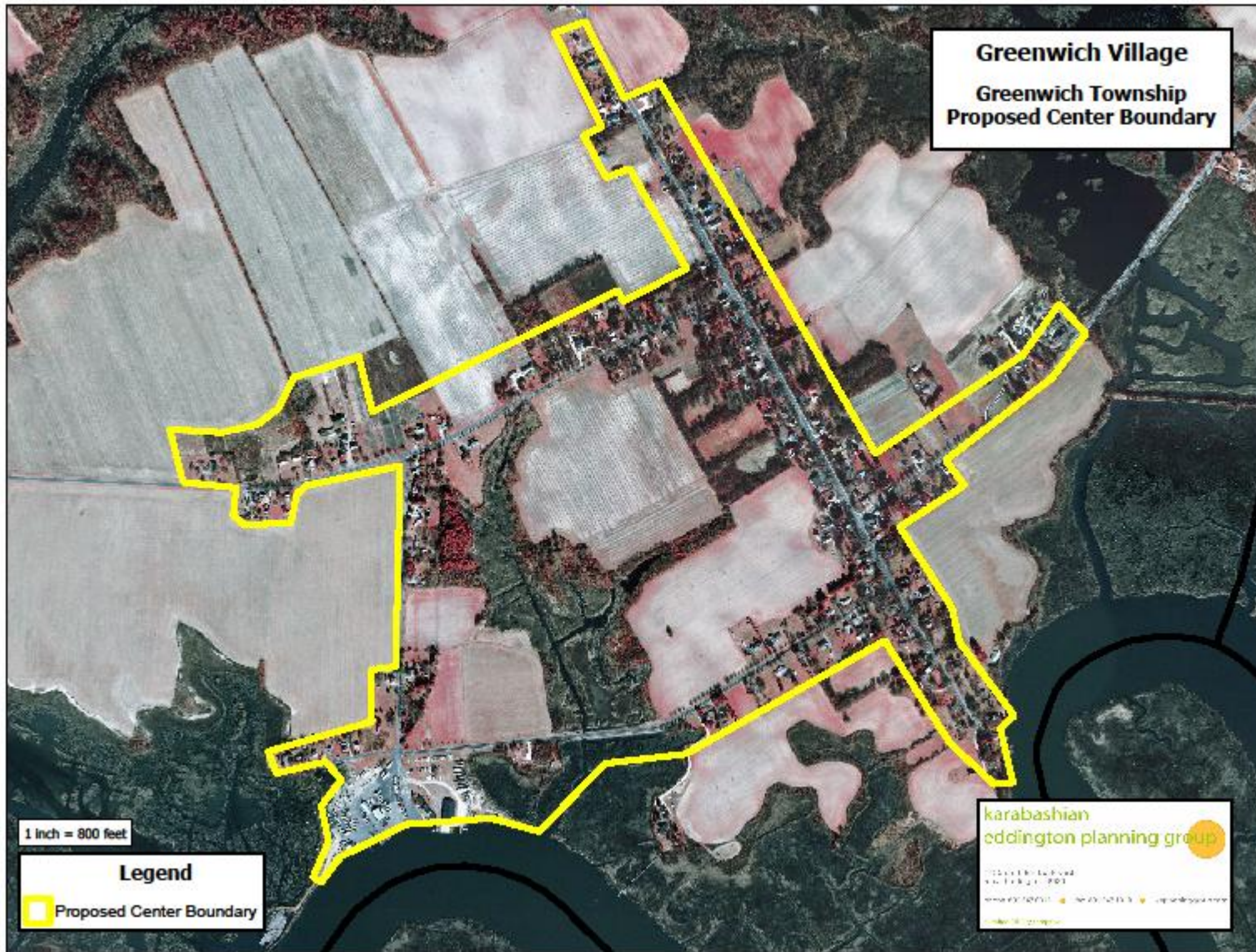
Short - 1 to 2 years

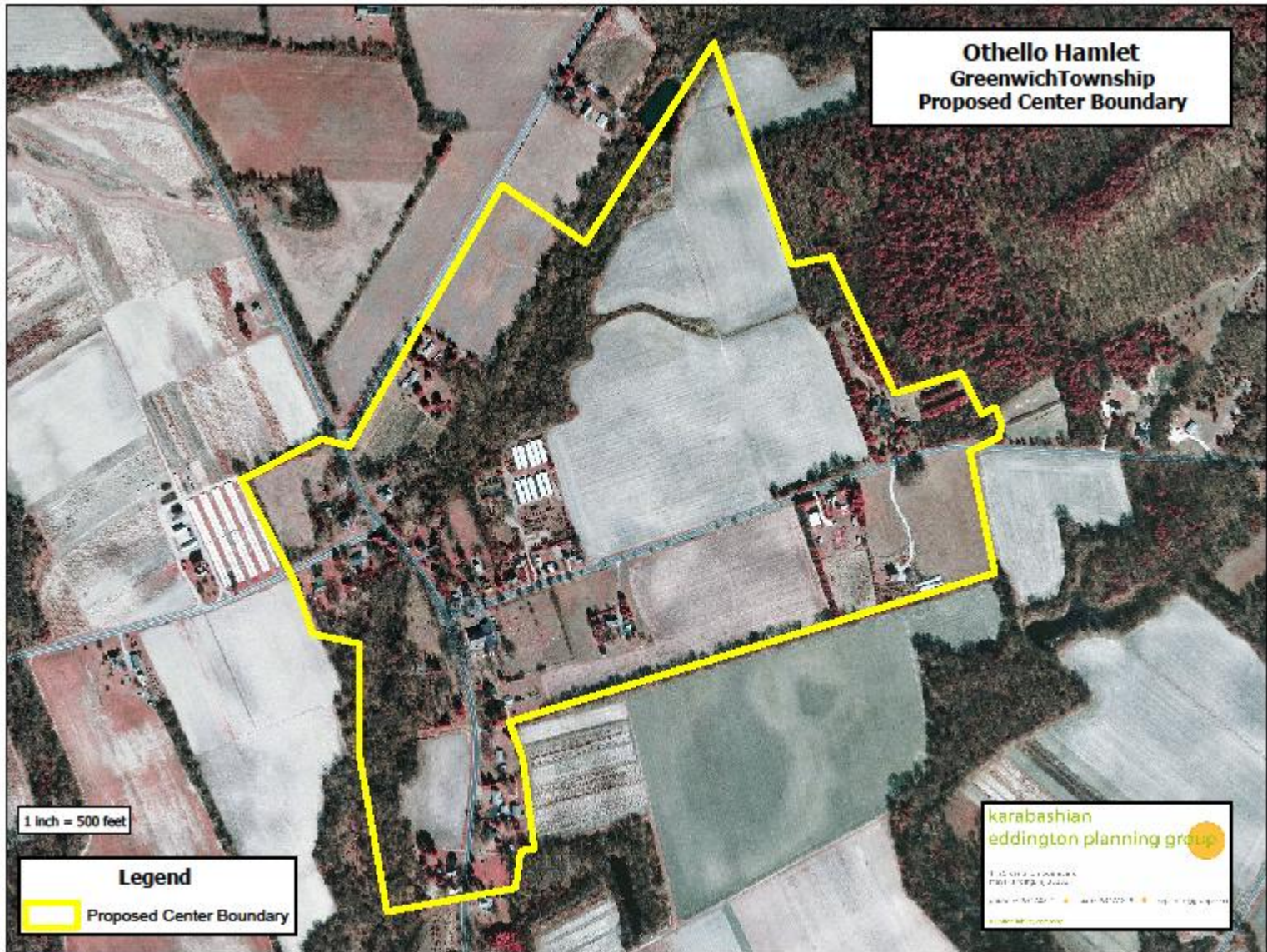
Medium - 3 to 5 years

Long - More than 5 years

GREENWICH TOWNSHIP MUNICIPAL PLANNING AND IMPLEMENTATION AGENDA

Areas	Issues	Strategies	Other Agencies	Time Frame	Targets	
Natural Areas	Provide recreational improvements to encourage ecotourism	1	Seek funds to develop Cohanse River Greenway in cooperation with Bridgeton, Upper Deerfield, Hopewell and Greenwich.	NJDEP	Medium	Cohansey Greenway Plan
		2	Examine long term upkeep of the Bayside tract, and issues of burden on the Township	NJDEP	Long	Study
	Maintain Cohansey River	3	Keep the Cohansey River open for recreational fishing and boating. Restore breached dike in River.	NJDEP	Long	River maintenance
Historic/Cultural	Develop transportation facilities to support ecotourism industry	4	Seek funding to develop a scenic road plan in coordination with the County scenic byway plan efforts.	NJDOT, CCDPD	Long	Scenic Byway Plan
Agriculture	Assess options to maintain farmland and reduce residential sprawl	5	Prepare an Agricultural Retention Plan, identifying farm properties and preservation goals and techniques.	CCDPD, CCDA	Medium	Agriculture Retention Plan
		6	Evaluate zoning to encourage density transfer to centers.	CCDPD	Medium	Zoning Ordinance
Transportation	Improve pedestrian access and safety	7	Implement pedestrian safety plan, through securing grants for new sidewalks in centers.	NJDOT, Local Aid for Centers of Place, CCIA, CC Engineer	On-going	Installed sidewalks
Economy	Develop businesses complementary to region	8	Redevelop marina and restaurant businesses along Cohansey River. Attract developer interest.	CDC, CCDPD, NJ Commerce, NJDCA, USDA, NJEDA	Medium	Revitalized properties and new jobs
Housing	Provide needed affordable housing	9	Seek funding to undertake Housing Plan in accord with COAH regulations	NJOSG, COAH	Medium	Housing Element and Fair Share Plan
Land Use	Support of development in centers	10	Assess development potential of the R-1 district, particularly around Springtown Hamlet.	CCDPD	Medium	Study results and zoning ordinance change if necessary
	Update land use plans and regulations	11	Update and revise Master Plan and Zoning Ordinance	NJOSP, NJDCA	Medium	New Master Plan and Zoning Ordinance
Intermunicipal Coordination	Continue regional planning efforts and projects	12	Continue WSCR planning process after Plan is endorsed to implement projects and development new plans and policies. Continue support for major WSCR projects, including the development of revenue sharing plans, intermunicipal industrial park and the Rural Enterprise Zone.	CDC, CCDPD, NJOSG	On-going	Implementation of projects, new plans
	Reduction of costs for municipal services	13	Develop regional senior citizens center for Greenwich, Hopewell, Shiloh, and Stow Creek	CCDP, NJDCA	Short	New Center
		14	Participate in regional shared services study to identify potential opportunities to reduce costs.	CDC	Medium	Shared services





**Springtown Hamlet
Greenwich Township
Proposed Center Boundary**

1 inch = 500 feet

Legend

 Proposed Center Boundary

**karabashian
eddington planning group**

1000 W. 10th Street
PO Box 1000
Greenville, SC 29602
www.karabashian.com

